

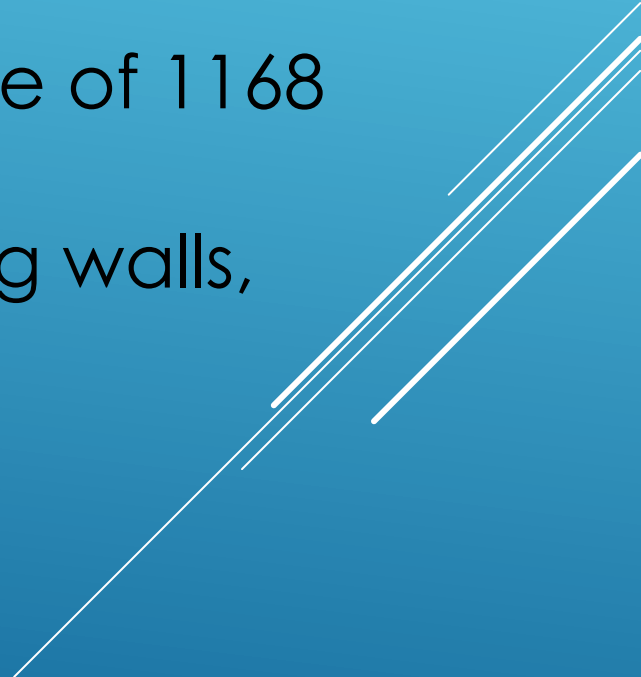
MONTEPUT D.O.O

MARKO MADŽGALJ
Manager of Civil Maintenance Department


A decorative graphic consisting of several parallel white lines of varying lengths, slanted upwards from left to right, located in the bottom right corner of the slide.


- The company Monteput is a government organization responsible for managing and maintaining highways in Montenegro, as well as the Sozina Tunnel and its access roads.
- We manage 40 km of the Bar-Boljare highway, specifically the Smokovac-Mateševo section.

- Plans :
 - to continue the highway construction, with the next section, which will be 23 km long from Mateševo to Andrijevica, set to begin soon.
 - in the process of developing conceptual designs and projects for the remaining sections of this highway, as well as other highways and expressways that Monteput will also manage.

- The existing section is 40 km long.
 - Short distance, but quite unique due to the large number of structures along it – 16 tunnels and 20 bridges (in one direction).
 - The highest point on the highway is at an altitude of 1168 meters, and the lowest is at 68 meters.
 - Numerous culverts, reinforced concrete retaining walls, and reinforced earth retaining walls.
- 
- A decorative graphic consisting of several parallel white lines of varying thicknesses, slanted diagonally from the bottom right towards the top right, set against a blue gradient background.

Several sectors are organized to manage and maintain the infrastructure, performing their activities through the following departments:

- Traffic Monitoring, Management, and Safety Department
 - Civil Maintenance Department
 - Electromechanical Maintenance Department
 - Protection and Rescue Department
- 
- A decorative graphic consisting of several parallel white lines of varying lengths, slanted diagonally from the bottom right towards the top right, set against the blue background.

- Winter road maintenance is the biggest challenge - a large part of this highway section is located in a mountainous region!
 - In the last third of this section, structures alternate, so you immediately exit from tunnels onto bridges, which are prone to freezing and ice formation on the pavement.
 - There are numerous structures along the existing highway route, so it will be challenging to conduct control and main inspections and regular maintenance on them in the future.
- 
- A decorative graphic consisting of several parallel white lines of varying thicknesses, slanted diagonally from the bottom right towards the top right, set against a blue background.

HIGHWAY SMOKOVAC – MATESEVO TECHNICAL SYSTEMS

1.WATER SUPPLY SYSTEM

2.TUNNEL'S HYDRO NETWORK SYSTEM

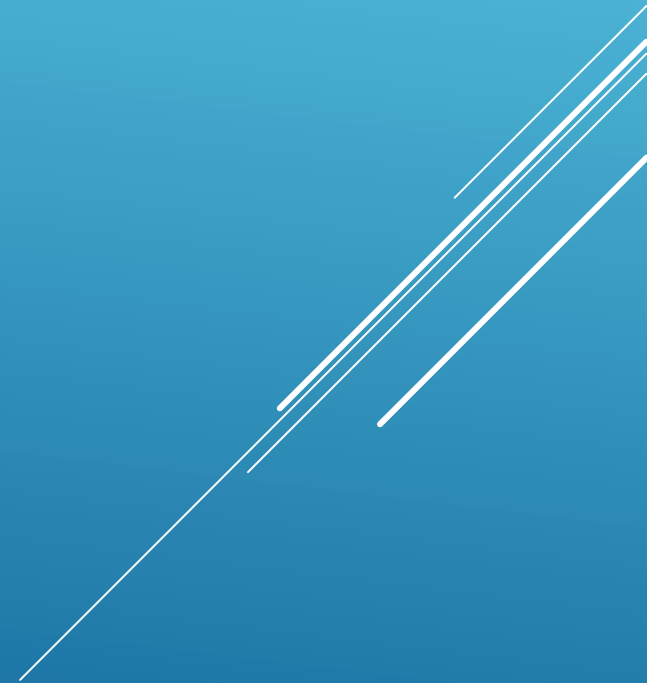
3.FIRE PROTECTION SYSTEM

4.VIDEO SURVEILLANCE SYSTEM

5. INCIDENT DETECTION SYSTEM

6.PUBLIC ADDRESS SYSTEM

7.TRAFFIC SIGNALISATION SYSTEM



8. TRAFFIC COUNTER SYSTEM

9. VENTILATION SYSTEM

10. LIGHTING SYSTEM

11. TETRA SYSTEM

12. SCADA SYSTEM

13. TOLL COLLECTION SYSTEM

14. POWER SUPPLY SYSTEM



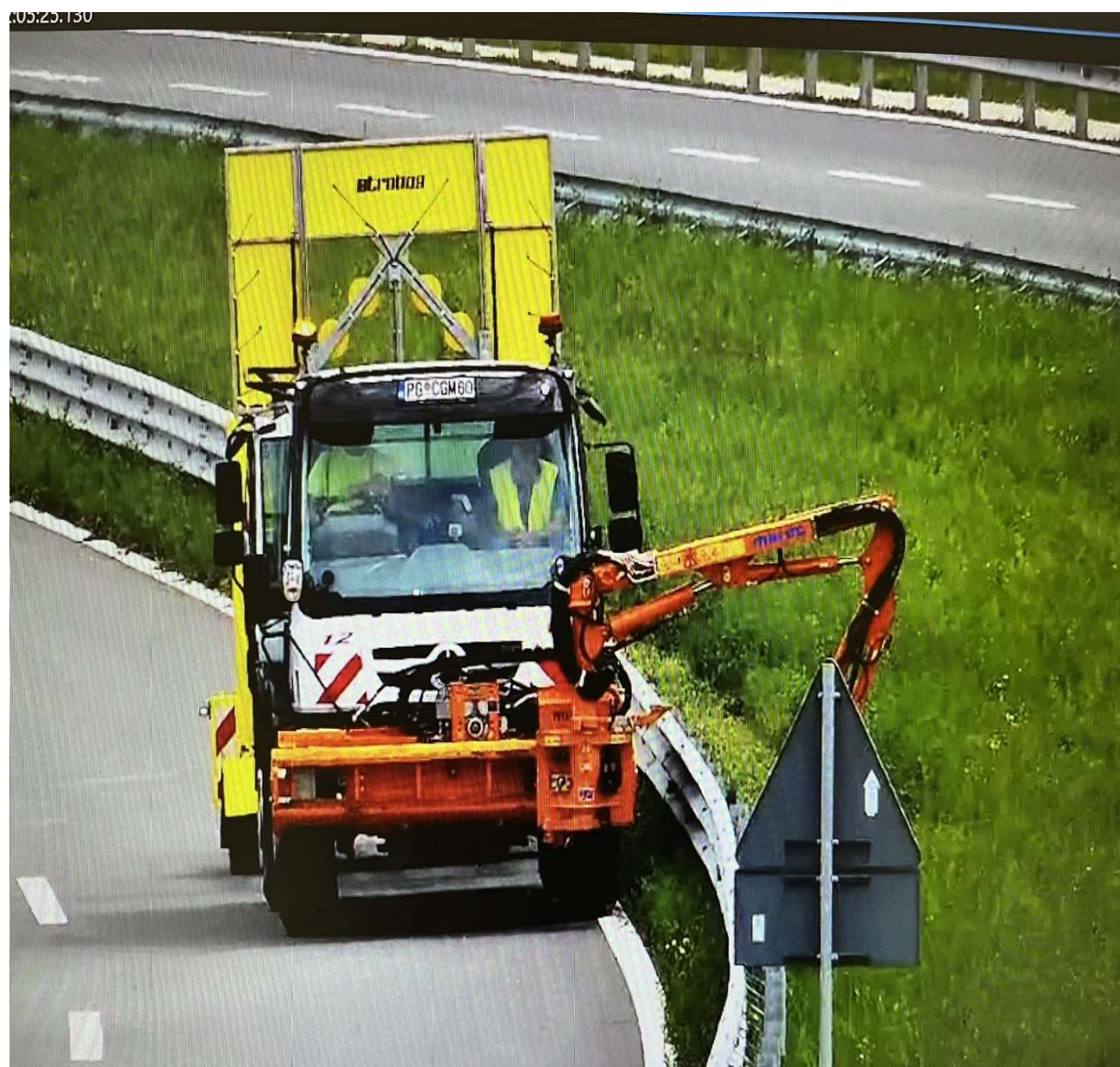
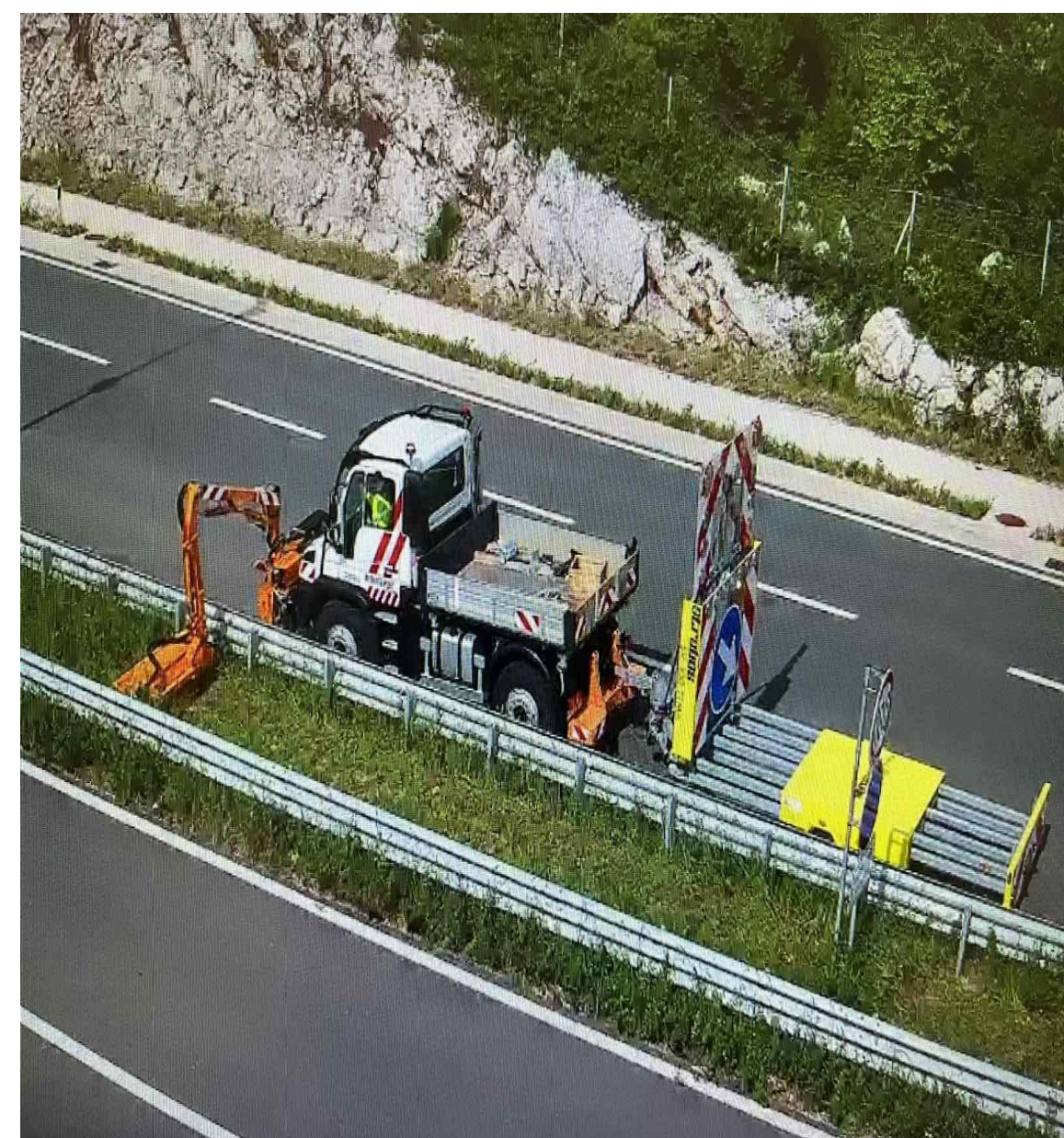


WINTER ROAD
MAINTENANCE





WASHING OF TUNNEL WALLS



Maintenance of green areas



Maintenance of the drainage system
in tunnels



Replacement of damaged parts of the protective steel guardrail



Fire Station – Protection and Rescue Department



Highway Traffic Control Center